

User Guide for EXNET Network Module

1 Introduction

EXNET, a kind of Industrial Ethernet module, links remote network equipments with the help of existing cable network and TCP/IP (Transmission Control Protocol/Internet Protocol) to realize remote control and monitor.

2 Interface Specification

Back Interface

1 Network Interface RJ45

2 Serial Interface and APB Communications

3 Reset Button

Back Interface

1 Positive Pole of 24V DC Power Supply

2 Negative Pole of 24V DC Power Supply

3 485 Interface A

4 485 Interface B

5 485 Interface A

6 485 Interface B

7 GND

8 Serial Port TX

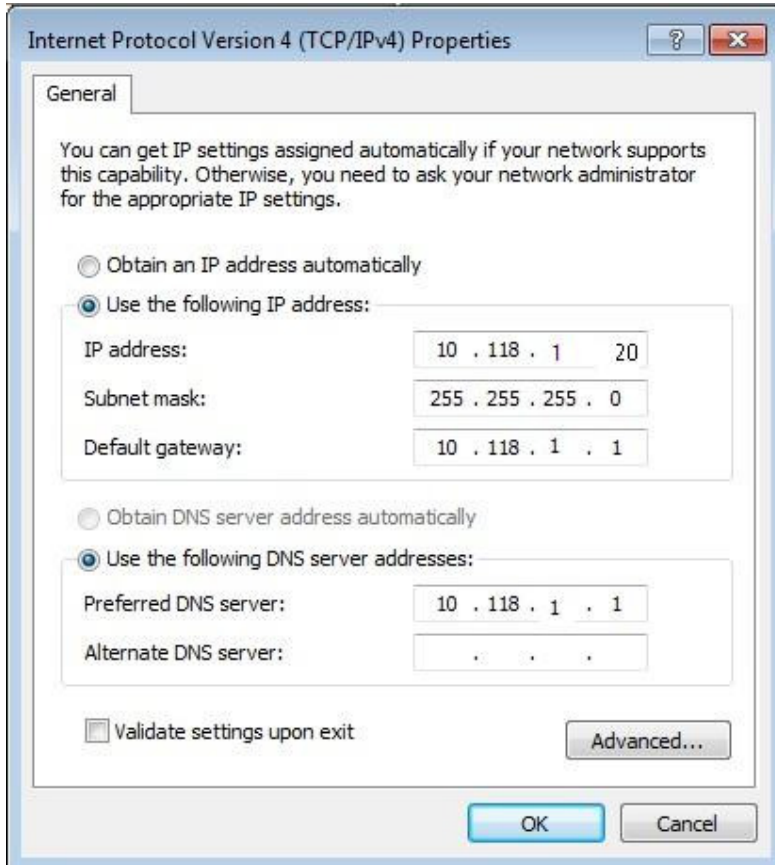
9 Serial Port RX

10 GND

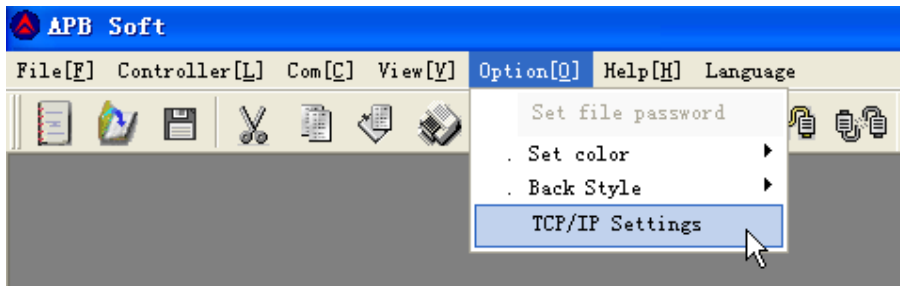
3 Operational Procedures

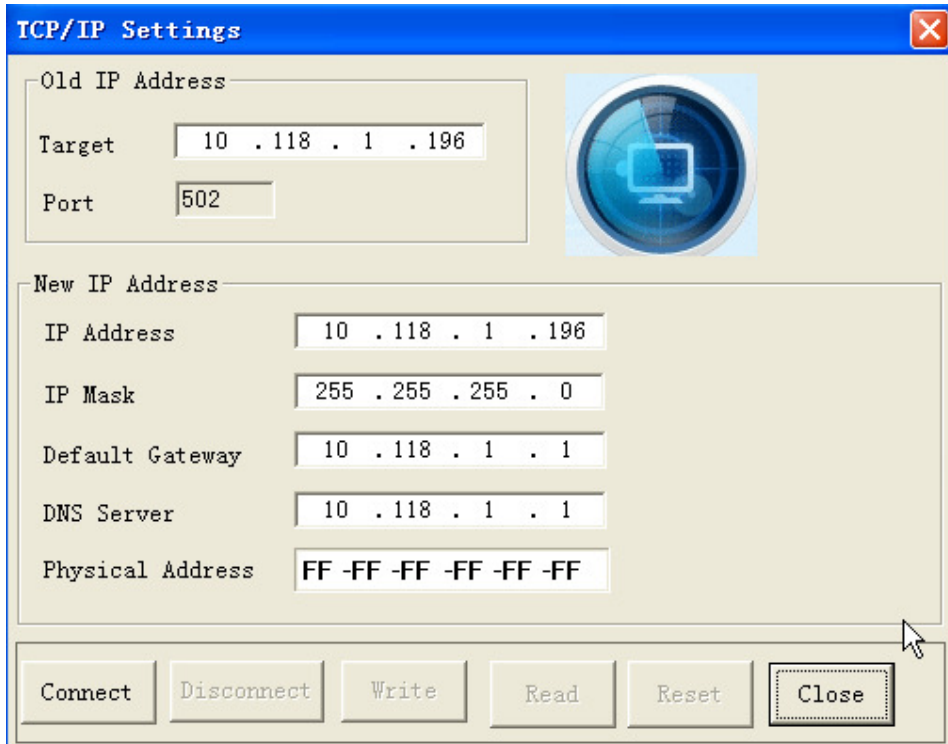
The operational procedures will be illustrated by an explanation of how to read and write to APB running file through the remote control of APB PLC after it is connected to the network module to monitor APB variables.

When ANET network module is linked to the supply power and the computer correctly, APB Software can be used to set new IP address. The factory default IP address of ANET network module is 10.118.1.196. If you want to modify IP address, firstly, set ANET network module and the computer it connects to in the same LAN and set the gateway address as 10.118.1.1. The following graph will guide you how to set TCP/IP address in Windows XP.



Run APB SoftWare, and open the menu illustrated by below graph:

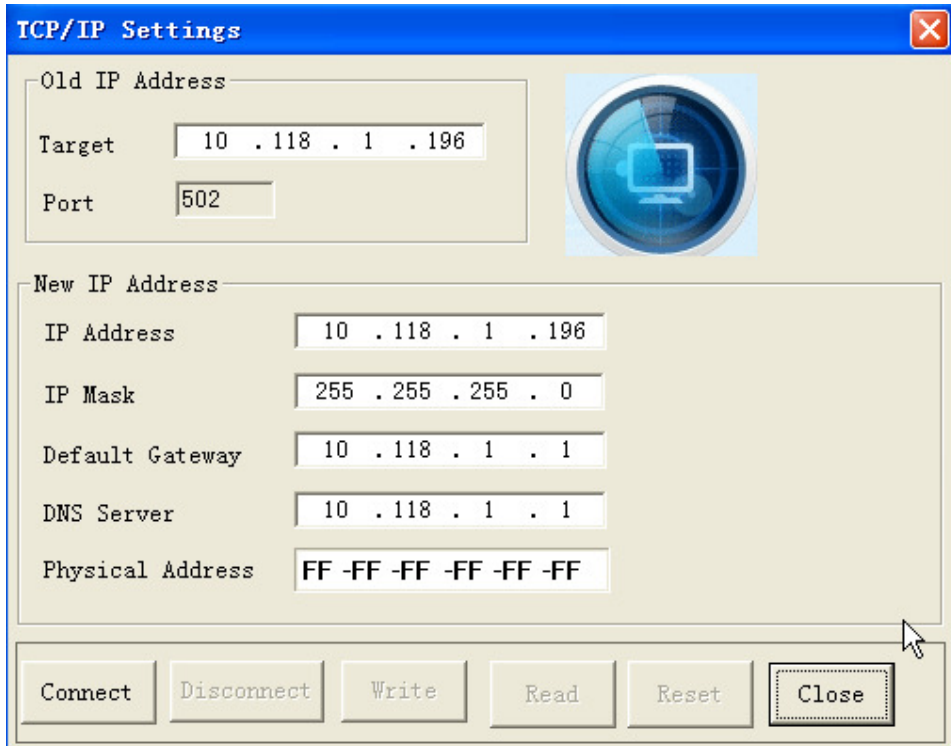




The image shows a 'TCP/IP Settings' dialog box with a blue title bar and a close button (X) in the top right corner. The dialog is divided into two main sections: 'Old IP Address' and 'New IP Address'. The 'Old IP Address' section contains a 'Target' field with the value '10 . 118 . 1 . 196' and a 'Port' field with the value '502'. To the right of these fields is a circular icon with a blue background and a white square in the center. The 'New IP Address' section contains several fields: 'IP Address' (10 . 118 . 1 . 196), 'IP Mask' (255 . 255 . 255 . 0), 'Default Gateway' (10 . 118 . 1 . 1), 'DNS Server' (10 . 118 . 1 . 1), and 'Physical Address' (FF -FF -FF -FF -FF -FF). At the bottom of the dialog, there is a row of six buttons: 'Connect', 'Disconnect', 'Write', 'Read', 'Reset', and 'Close'. The 'Close' button is highlighted with a dashed border and a mouse cursor is pointing at it.

| Field | Value |
|------------------|------------------------|
| Old IP Address | |
| Target | 10 . 118 . 1 . 196 |
| Port | 502 |
| New IP Address | |
| IP Address | 10 . 118 . 1 . 196 |
| IP Mask | 255 . 255 . 255 . 0 |
| Default Gateway | 10 . 118 . 1 . 1 |
| DNS Server | 10 . 118 . 1 . 1 |
| Physical Address | FF -FF -FF -FF -FF -FF |

Click Connect button to link and set the information about the new IP address, including IP address, subnet mask, default gateway, DNS server, and MAC address. Refer to the below graph to set the information about IP address according to your requirement.

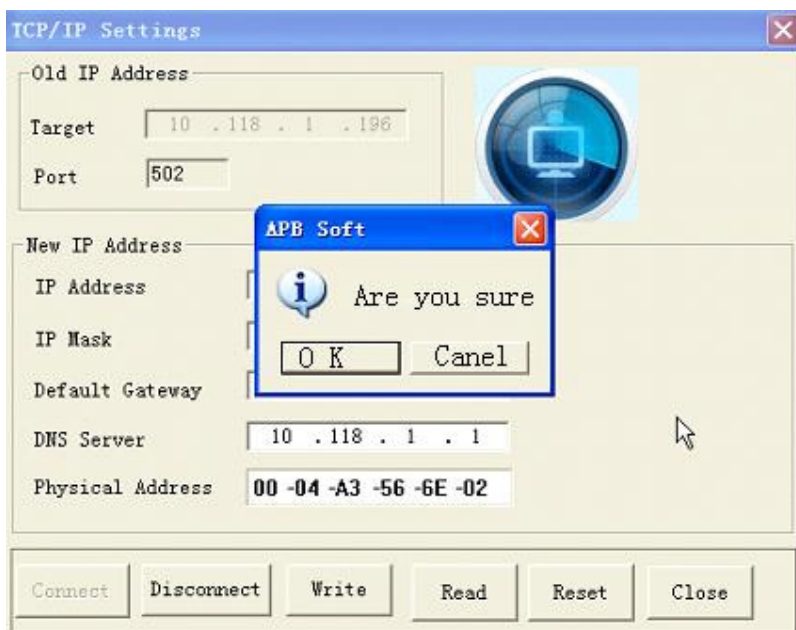


Click Set button, the below graph will be shown:

Are you sure to modify parameters?

OK

Cancel



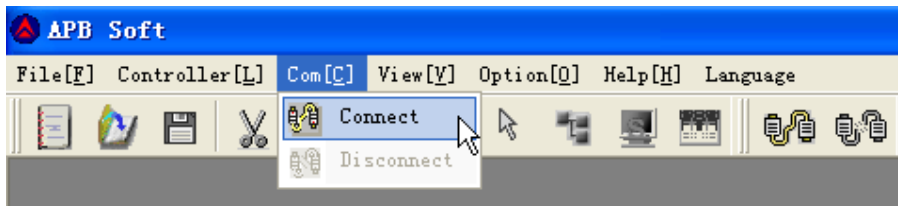
Click OK button to confirm. Now the parameters are set successfully and you can exit setting interface.

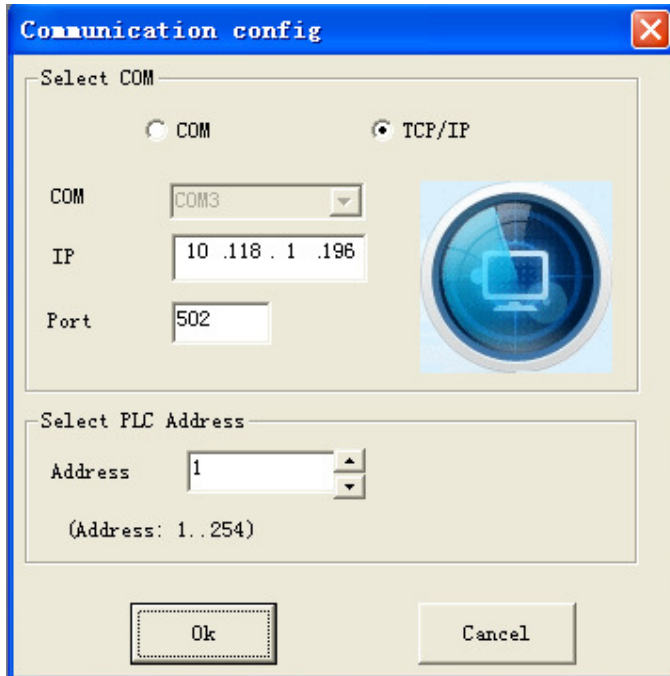


Successful Parameter Settings

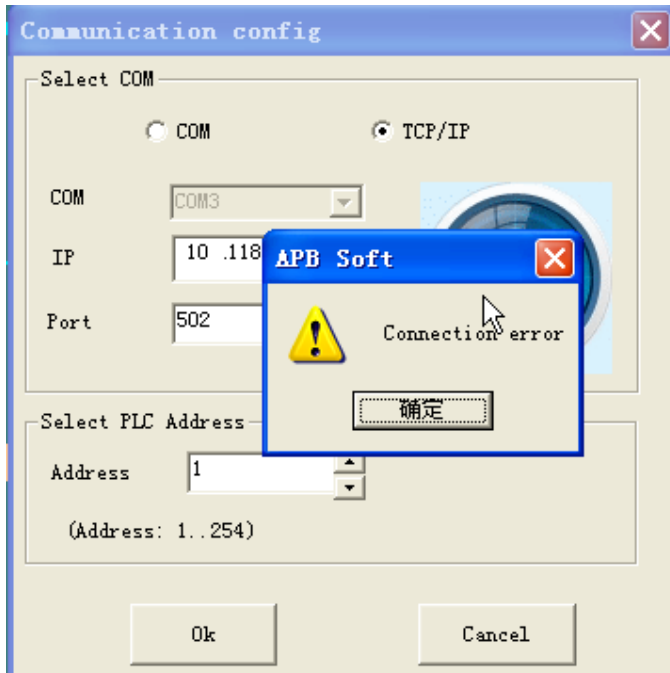
OK

Run APB Software, click the menu shown below, select TCP/IP Connection, fill in the predefined IP address and click “Connect to APB” button.





When it is correctly linked, this interface disappears automatically, and enter into the main interface of APB Soft. If it fails to connect, the following information will be given. And you should check if the IP address and port number are written accurately; if the reticle connation is reliable and the power linkage is proper.



Connection Error

OK

After APB PLC is properly linked to ANET network module, the main interface of APB Soft will appear, then you can control APB PLC remotely.

