

OPTICAL INCREMENTAL ROTARY ENCODER

MODEL PRI 50



PRI 50R

PRI 50SH

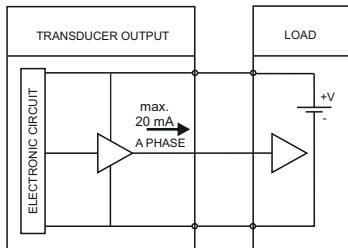
PRI 50H

TECHNICAL FEATURES

RESOLUTION pulse/turn	100 - 200 - 300- 360 - 400 - 500 - 600 - 720 - 1000 - 1024 - 1800 - 2000 - 2048 - 2500 - 3600 - 4000 - 4096 - 5000
CONTROL OUTPUT	Pushpull (Totempole, Open Collector Compatible) / TTL Linedriver, HTL Linedriver
CHANNELS	A, B, Z or A, \bar{A} , B, \bar{B} , Z, \bar{Z}
MAX. SPEED	4.000 RPM
POWER SUPPLY	5V DC, 8V-24V DC, 5V-24V DC
WORKING TEMPERATURE	-20°C ... 80°C
CABLE	2.5m (Standart) 5 Wire + Shield for Pushpull / 2.5m (Standart) 8 Wire + Shield for Linedriver
PROTECTION CLASS	IP 54 / IP 50 (hallow shaft)
SHAFT DIAMETER	ø 6 - 8 - 10 mm
SHAFT MATERIAL	Stainless Steel
BODY CASE	Aluminium and Painted Steel
CASE DIAMATER	ø 50 mm

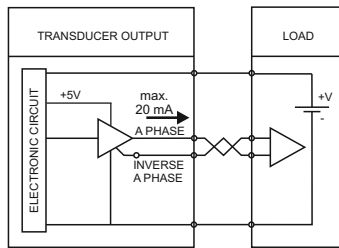
ELECTRICAL FEATURES

Pushpull (Totempole, Open Collector Compatible)



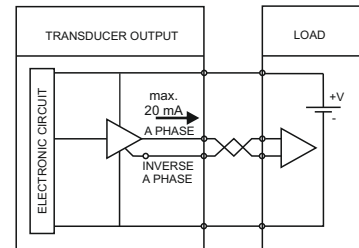
Supply Voltage : +V= 8-24 VDC
Output Voltage : ± 8-24V

RS422 Compatible TTL Linedriver



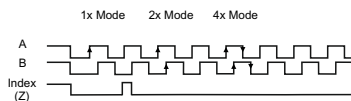
Supply Voltage : +V= 5V DC or +V=5-24V
Output Voltage : 5V DC

RS422 Compatible HTL Linedriver

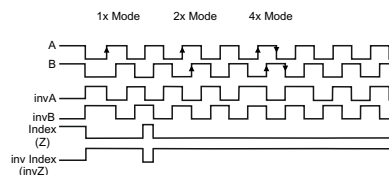


Supply Voltage : +V= 5V - 24V DC
Output Voltage : 5 - 24V DC

QUADRATURE OUTPUT for PUSHPULL



QUADRATURE OUTPUT for TTL Linedriver & HTL Linedriver



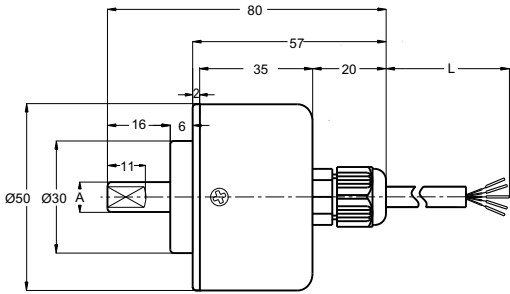
Cable colors

- +V : Brown
- GND : White
- Ch A : Yellow
- Ch B : Green
- Ch Z : Gray
- Ch A inv. : Blue
- Ch Z inv. : Pink

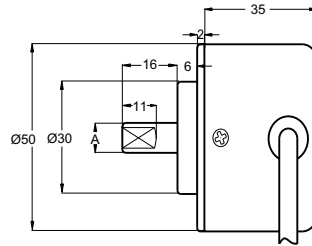
ORDERING PROCEDURE

PRI	50	R	8	LTP	500	B	V2	2M5	R
model	body ømm	shaft type	shaft diameter ømm	output type	resolution (pulse/turn)	channels	supply	cable	cable connecting type
PRI	50mm	R : shaft SH : semi hallow H : hallow	6 : 6mm 8 : 8mm 10 : 10mm	TT : TTL output LTP : Pushpull LD : Linedriver HLD : HTL Linedriver	100 - 5000	B : A,B BB : A, \bar{A} B, \bar{B} Z : A,B,Z ZZ : A, \bar{A} B, \bar{B} Z, \bar{Z}	V1 : 5V DC V2 : 8V - 24V DC V3 : 5V - 24V DC	2M5 : 2,5m 5M : 5m 8M : 8m 10M : 10m	R : Radial A : Axial

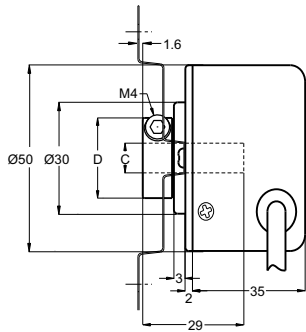
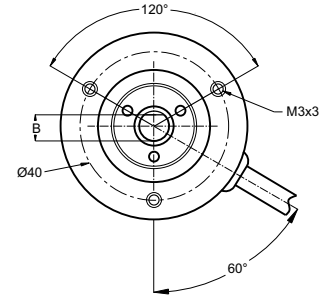
MECHANICAL FEATURES



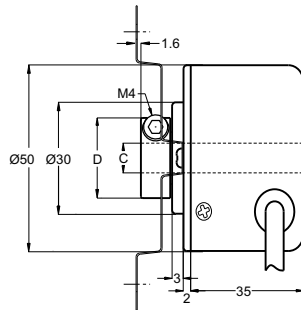
Shaft Type / Axial



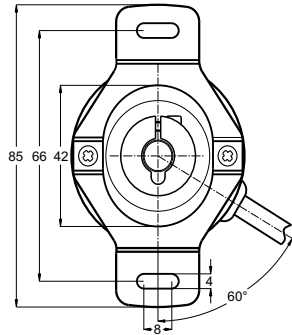
Shaft Type / Radial



SH Type



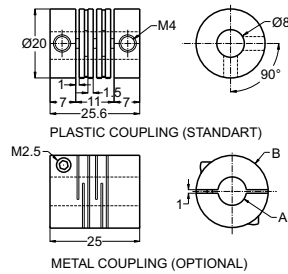
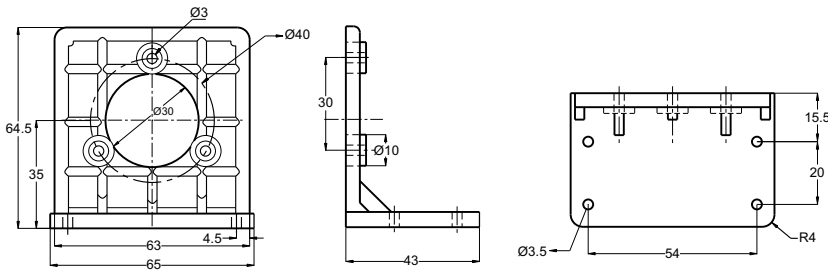
H Type



PRI 50 R	R (shaft)	
	A	B
	Ø6mm	5mm
	Ø8mm	7mm
	Ø10mm	9mm

PRI 50 SH / H	SH (semi hallow) / H (hallow)	
	C	D
	Ø6mm	20mm
	Ø8mm	22mm
	Ø10mm	28mm

ACCESSORIES



METAL COUPLING	
A	B
Ø4x4	Ø19
Ø6x6	
Ø8x8	
Ø10x10	Ø20.3

WARNINGS

