



TC-Pro48 Series

Multi-Function LCD Digital Timer Counter Tachometer

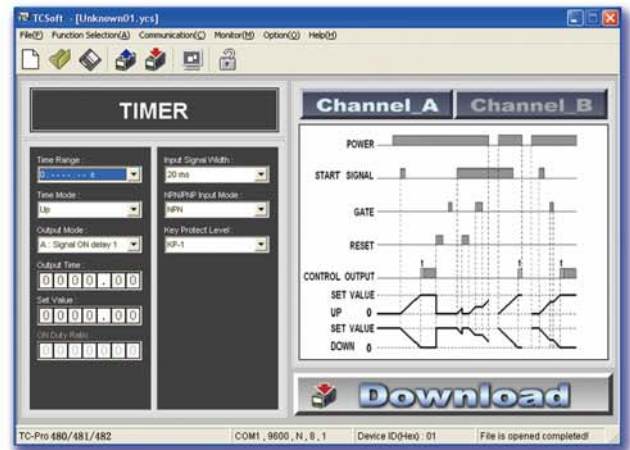


- ◆ 6 digit LCD screen display with backlit
- ◆ Conform to the key design of ergonomics
- ◆ Five Key Protection Modes: KP-1~5
- ◆ EEPROM (overwrites: 100,000 times min.) that can store data for 10 years min
- ◆ NPN/PNP switchable DC -voltage input
- ◆ 12VDC external supply power can drive the external optical sensors, such as encoder, infrared switches etc..
- ◆ Applied to connect PC/HMI

Powerful Communication Function

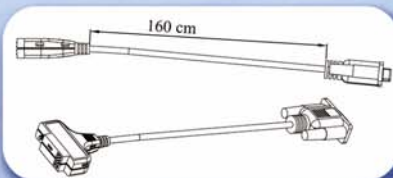
- A variety of alternative communication format:
Communication rate: 1200~57600bps,
Date Bit: 7/8bit,
Parity check: N/O/E,
Stop bit: 1/2bit
- Free PC Software TCSOFT:
Quick setting and real time monitoring
- Support MODBUS protocol
Connect all kinds of HMI/Text Display/OPC/
Self-made software
- Support RS-232/RS-485/RS-422 communication
interface mode

TC / SOFT Interface

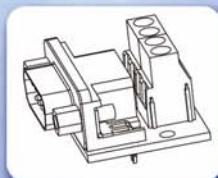


Accessories

Cable

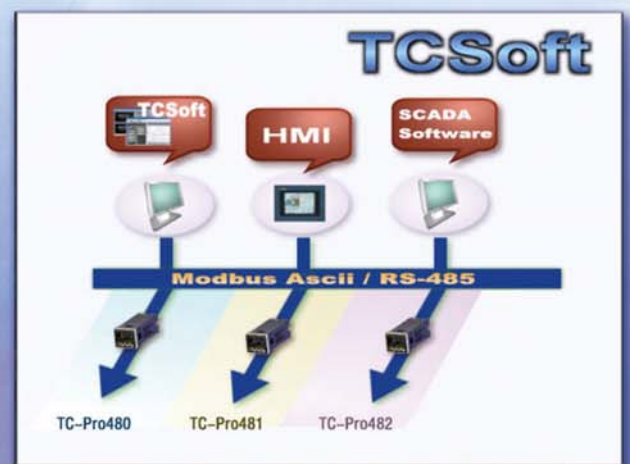


Adapter



Name	Model
9-pin Female D-sub cable for RS-232 connector, 1.5M Cable	CAB-090A232
9-pin Female D-sub cable for RS-485 connector, 1.5M Cable	CAB-090A485
9-pin Female D-sub cable for RS-422 connector, 1.5M Cable	CAB-090A422
9-pin male D-sub adapter for CAB-090A232/CAB-090A485/CAB-090A422	ADP-090401

Connect to PC



Model Number Legend

TC-Pro 48

1 2 3 4

1. Model

- 0: Multi-Function LCD Digital Timer
- 1: Multi-Function LCD Digital Counter/Tachometer
- 2: Full-Function LCD Digital Timer/Counter/Tachometer

2. Communication

- S: Standard (no communication)
- C: Communication

3. Output

- R: Relay
- T: Transistor

4. power supply

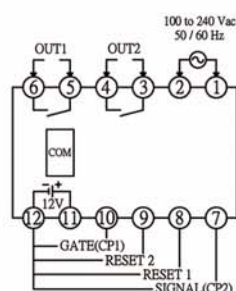
- A: AC100V~240V
- D: DC12V~24V, AC24V

List of Models

TC-Pro480 SRA	TC-Pro481 SRA	TC-Pro482 SRA
TC-Pro480 SRD	TC-Pro481 SRD	TC-Pro482 SRD
TC-Pro480 STA	TC-Pro481 STA	TC-Pro482 STA
TC-Pro480 STD	TC-Pro481 STD	TC-Pro482 STD
TC-Pro480 CRA	TC-Pro481 CRA	TC-Pro482 CRA
TC-Pro480 CRD	TC-Pro481 CRD	TC-Pro482 CRD
TC-Pro480 CTA	TC-Pro481 CTA	TC-Pro482 CTA
TC-Pro480 CTD	TC-Pro481 CTD	TC-Pro482 CTD

Note: The model with communication must be used by cable.

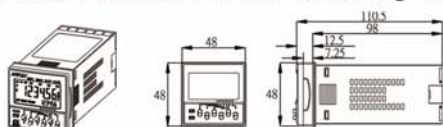
Wiring diagram



- ◆ AC100~240V/AC24V/DC12~24V, three optional power supply
- ◆ 12VDC external supply power can drive the external optical sensors, such as encoder, infrared switches etc..

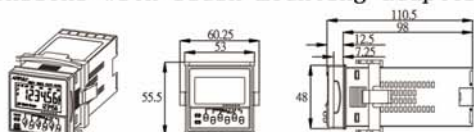
Installation Dimension

Dimensions without flush mounting adapter

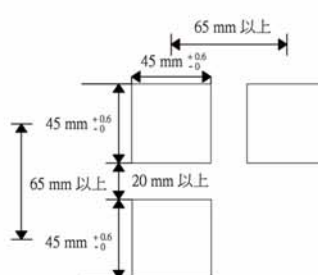


Note: M3 terminal screw (The effective length: 8mm)

Dimensions with flush mounting adapter



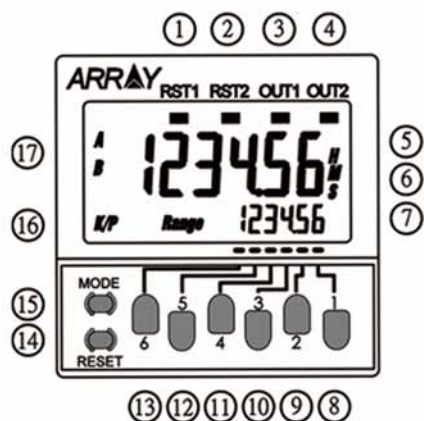
Panel Cutout



Note:

1. The mounting panel thickness should be 1.5mm.
2. To allow easier operability, it is recommended that adapters are mounted so that the gap between sides with hooks is at least 20mm.
3. It is possible to mount counters side by side, but only in the direction without the hooks.

Nomenclature



- ① ② Reset Indicator
- ③ ④ Control Output Indicator
- ⑤ Present Value (character height: 9 mm)
- ⑥ Display time unit
- ⑦ Set Value (character height: 4 mm)
- ⑧ The first setting key
- ⑨ The second setting key
- ⑩ The third setting key

- ⑪ The fourth setting key
- ⑫ The fifth setting key
- ⑬ The sixth setting key
- ⑭ Reset key
- ⑮ Mode key
- ⑯ Key Protection Indicator
- ⑰ Set value (Range) A,B display

/// Series and Features



TC-PRO480 series

★ Multi-Function LCD Digital Timer

- ◆ Three timing methods: timer, twin-timer, 2-stage timer
- ◆ Up/down time mode
- ◆ 12 output modes altogether
- ◆ Min. input signal width: 1~20ms
- ◆ One-short output time: 0.01~9999.99s



TC-PRO481 Series

★ Multi-Function LCD Digital Counter/Tachometer

- ◆ Five Counting Methods: 1-stage counter, 2-stage counter, total counter, batch counter and dual counter
- ◆ Five Counting Modes: UP, DOWN, UP/DOWN A, UP/DOWN B, UP/DOWN C
- ◆ 12 counting output modes altogether
- ◆ Max. Counter speed: 30Hz or 5kHz
- ◆ Tachometer speed: 30Hz or 10kHz



TC-PRO482 Series

★ Full-Function Timer/Counter/Tachometer

- ◆ Can implement all functions of TC-Pro480 series and TC-Pro481 series