



DMM

multimeters protection

fuse links



**PROTECTING
THE WORLD**





RATED VOLTAGE
1000V AC/DC

RATED CURRENT
11A

BREAKING CAPACITY
30kA

STANDARDS
RoHS COMPLIANT



DMM Multimeters protection fuse links

DMM fuse links are specially designed for the protection of multimeters. They have fast acting characteristic. Intended to carry 100% of rated current continuously.

Maximum working voltage is 1000V AC/DC

The range comprises the following fuse links:

→ Size 10x38 1000V AC/DC 11A

RoHS directive compliant.



Range

| I_n (A) | REFERENCE | PACKING Uni /BOX |
|--------------|---------------|---------------------|
| 11 | 416010 | 10 |

Technical data

| | |
|-------------------------|----------------|
| Rated voltage | 1000V AC/DC |
| Rated current | 11A |
| Rated breaking capacity | 30kA |
| Power dissipation | 1,92W |
| Storage temperature | -40°C ... 90°C |
| Operating temperature * | -40°C ... 80°C |

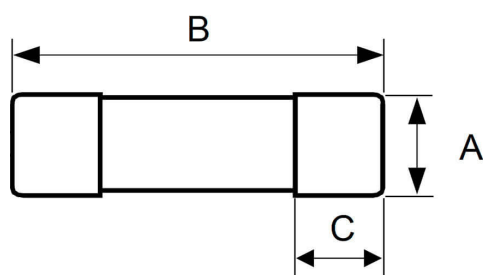
* For ambient temperatures higher than 25°C it is necessary to apply a derating in maximum current.

Standards

RoHS Compliant

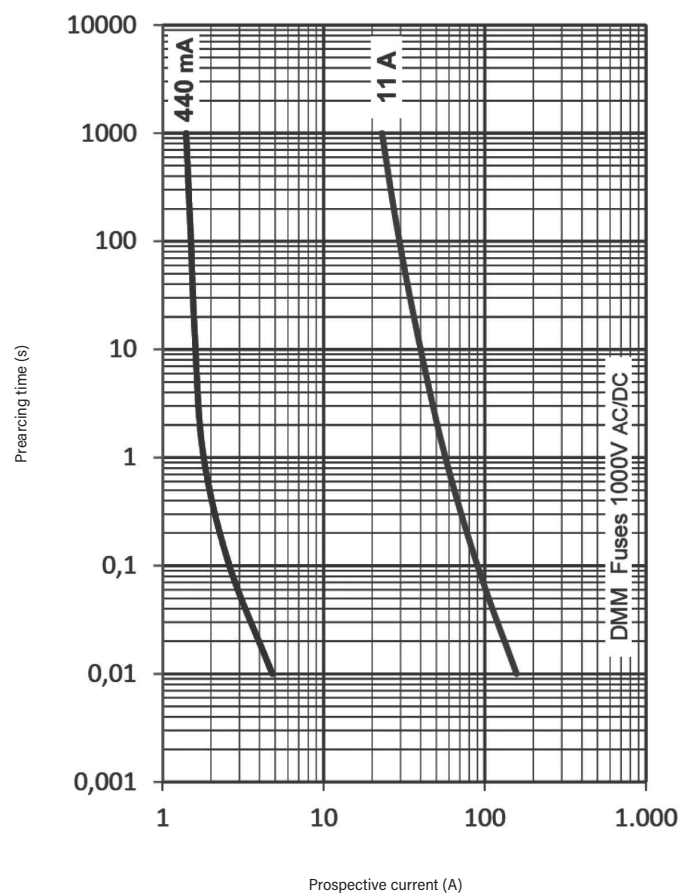


Dimensions



| A | B | C | Weight |
|------|----|----|--------|
| 10,3 | 38 | 10 | 8 gr |

t-I characteristics





HEAD OFFICE AND FACTORY

SILICI, 67-69
08940 CORNELLA DE LLOBREGAT
BARCELONA
SPAIN
Tel. +34 93 377 85 85
Fax +34 93 377 82 82

INTERNATIONAL SALES

Tel. +34 93 475 08 64
Fax +34 93 480 07 75
export@dfelectric.es

NATIONAL SALES

Tel. 93 475 08 64
Fax 93 480 07 76
comercial@dfelectric.es

dfelectric.es



The data reflected in this technical record are subject to the correct installation of the product in accordance with manufacturer's instructions, relevant installation standards and professional practices, maintained and used in applications for which they were made.

DF ELECTRIC retains the right to change the dimensions, specifications, materials or design of its products at any time with or without notice.

©2021 DF Electric. All rights reserved



PROTECTING THE WORLD

